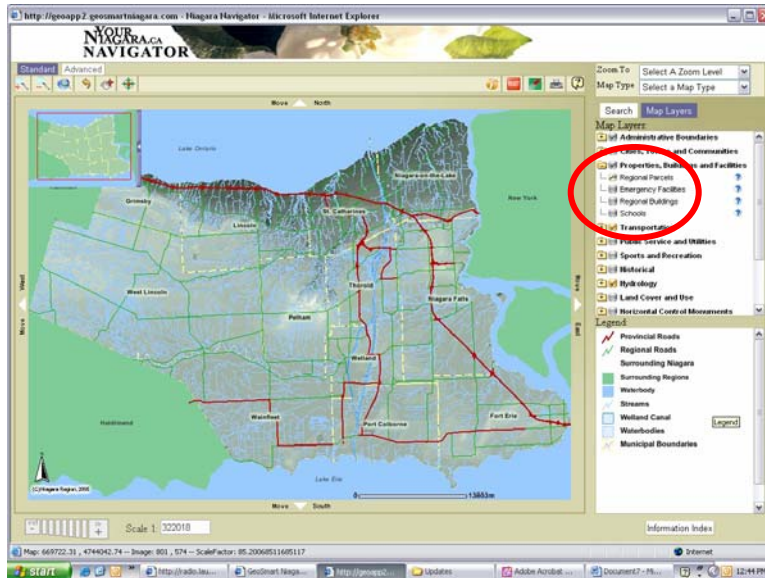


Niagara Navigator Zoom Scale Dependency Settings

Why are some data layers in the Niagara Atlas visible only at certain scales? This property is called “zoom scale dependency” and this document outlines the zoom scale dependency settings for common layers in Niagara Navigator.

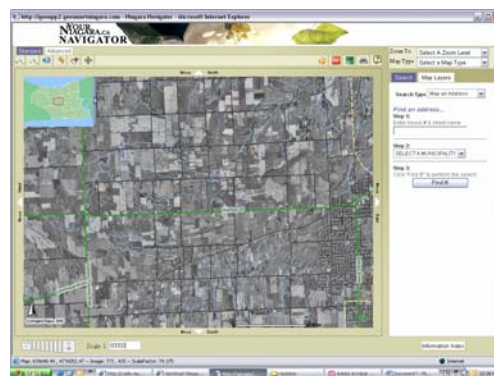
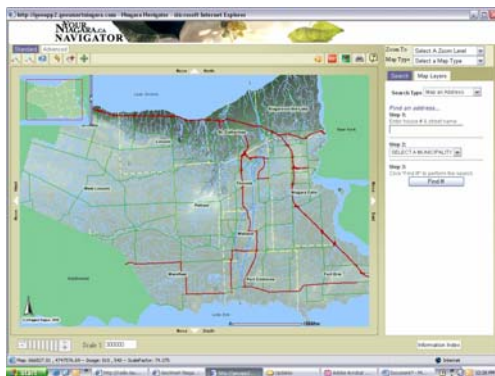
A user can recognize which layers have zoom scale dependencies by examining the layer list. When a layer is turned on and a magnifying glass is shown in the radial button to the left of the layer name, then a zoom scale dependency has been set.



Important Note About Scale: A large-scale map shows a small area in great detail. A small-scale map shows a larger land area, but in less detail. Since map scales are expressed as ratios or fractions, 1:50,000 is a larger fraction of a whole than 1:300,000.

Smaller Scale – 1:300,000

Larger Scale – 1:50,000



Zoom scale dependencies ensure data is visible only at the appropriate scale. Property mapping, for example, is only visible once the user has zoomed in to a scale of 1:100,000 or larger. If the user turns on the property mapping and zooms out to a scale smaller than 1:100,000 the property mapping will stay activated on but will disappear from both the map and the legend. The layer list will indicate this with a picture of a magnifying glass, rather than a checkmark. When the user zooms back in to 1:100,000 or larger the property mapping will display immediately as it is already turned on. The legend will be updated appropriately, as will the layer list.

Table 1 - Common layers and the scales at which features are visible.

Layer	Scale
Elevation Images	1:150,000 and above (e.g. 1:200,000)
Black & White Aerial Photography	1:250,000 through 1:700
Colour Aerial Photography	1:250,000 through 1:700
Property Mapping	1:50,000 and below
<i>Roads</i>	
Provincial and Regional Roads	1:75,000 and above
Provincial, Regional and Municipal Roads	1:75,000 and below
<i>Road Labels</i>	
Limited Labels	1:75,000 and above
Provincial and Regional Roads Labels	1:75,000 through 1:12,000
Provincial, Regional and Municipal Labels	1:12,000 and below